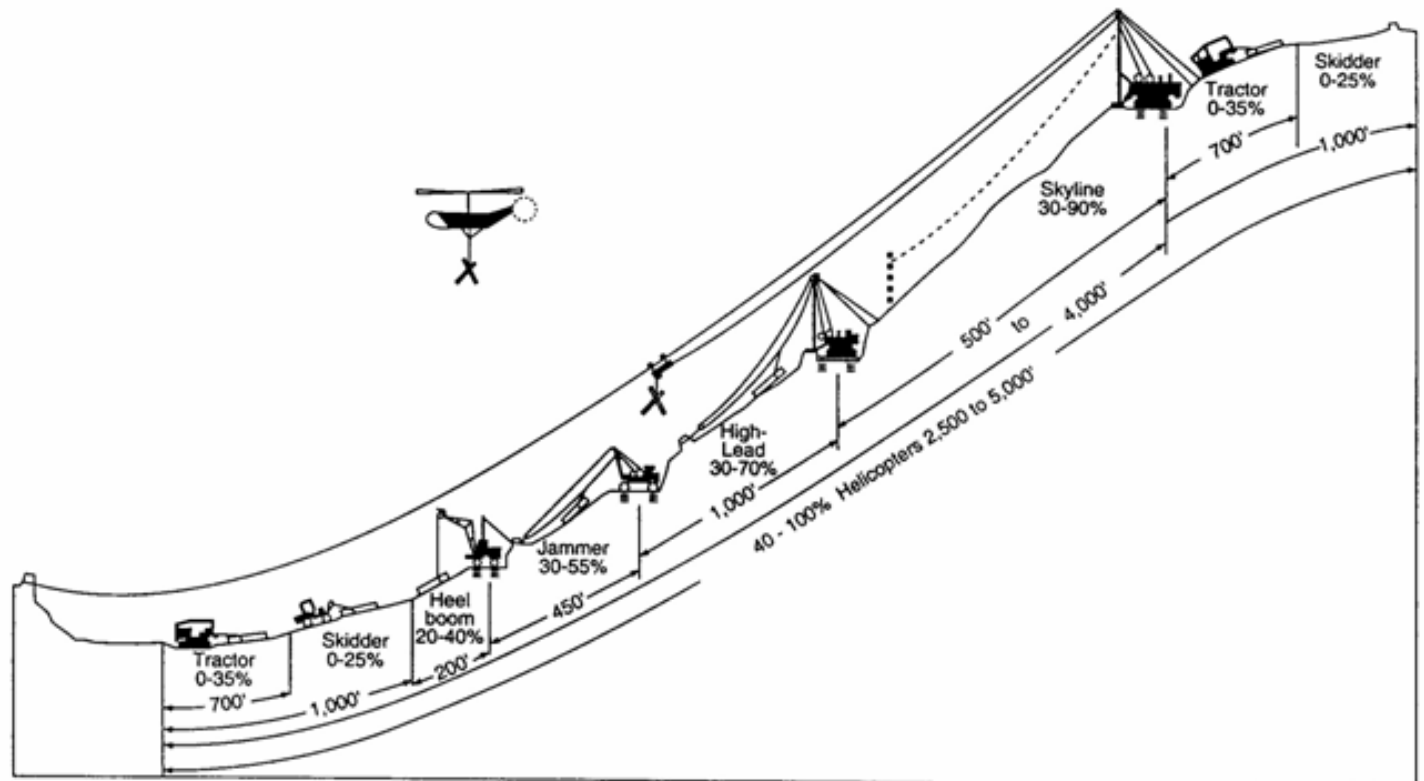


# FE 370 Harvesting Operations

## FE 371 Harvesting Process Engineering

### Course Learning Objectives



**1. Be able to explain harvesting process terminology, and identify the capabilities and limitations of different equipment/systems operating in a range of different forest resource conditions**

- Terminology

1. Be able to explain harvesting process terminology, and identify the capabilities and limitations of different equipment/systems operating in a range of different forest resource conditions



Harvesting  
*Felling & Processing*  
*Primary Transport*



Roads



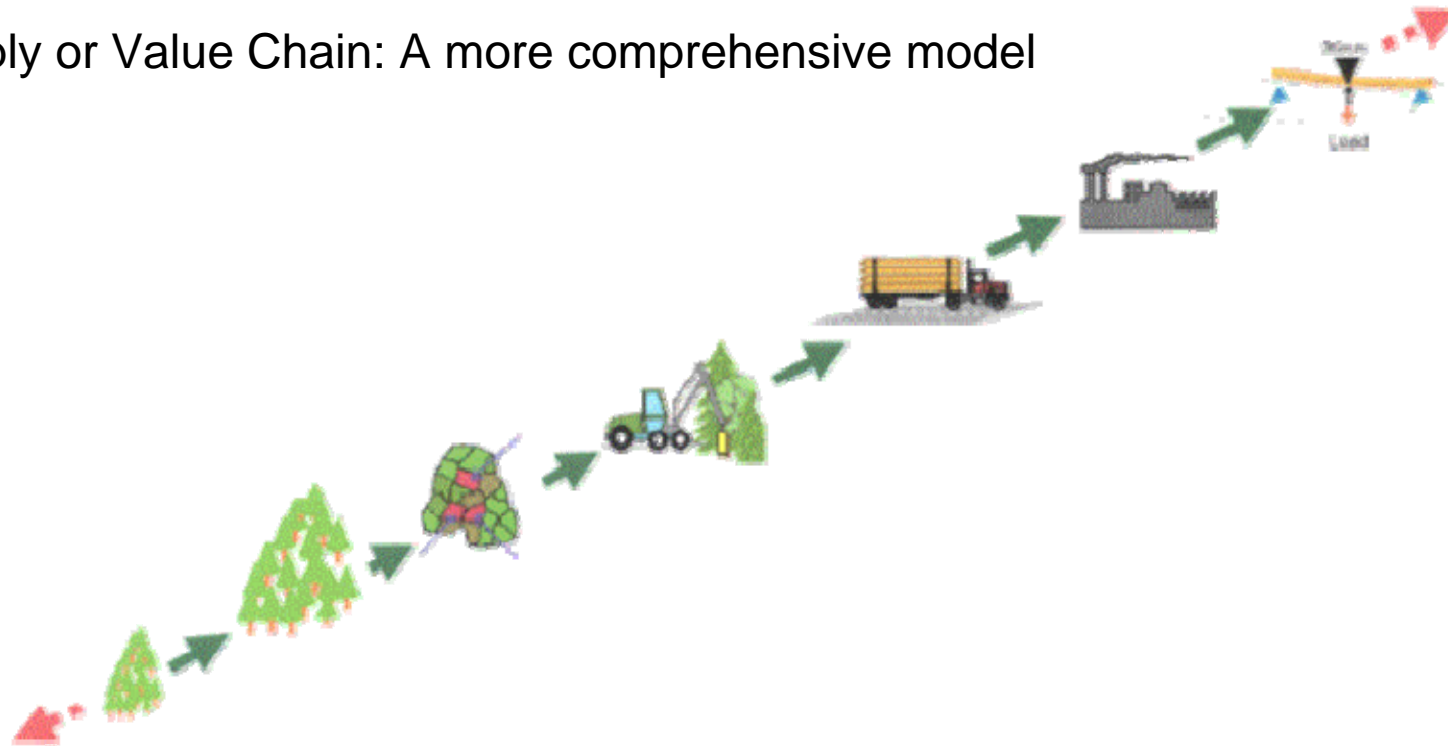
Transport  
*Secondary Transport*

**1. Be able to explain harvesting process engineering terminology, and identify the capabilities and limitations of different equipment/systems operating in a range of different forest resource conditions**

- Equipment/Systems Capabilities and Limitations

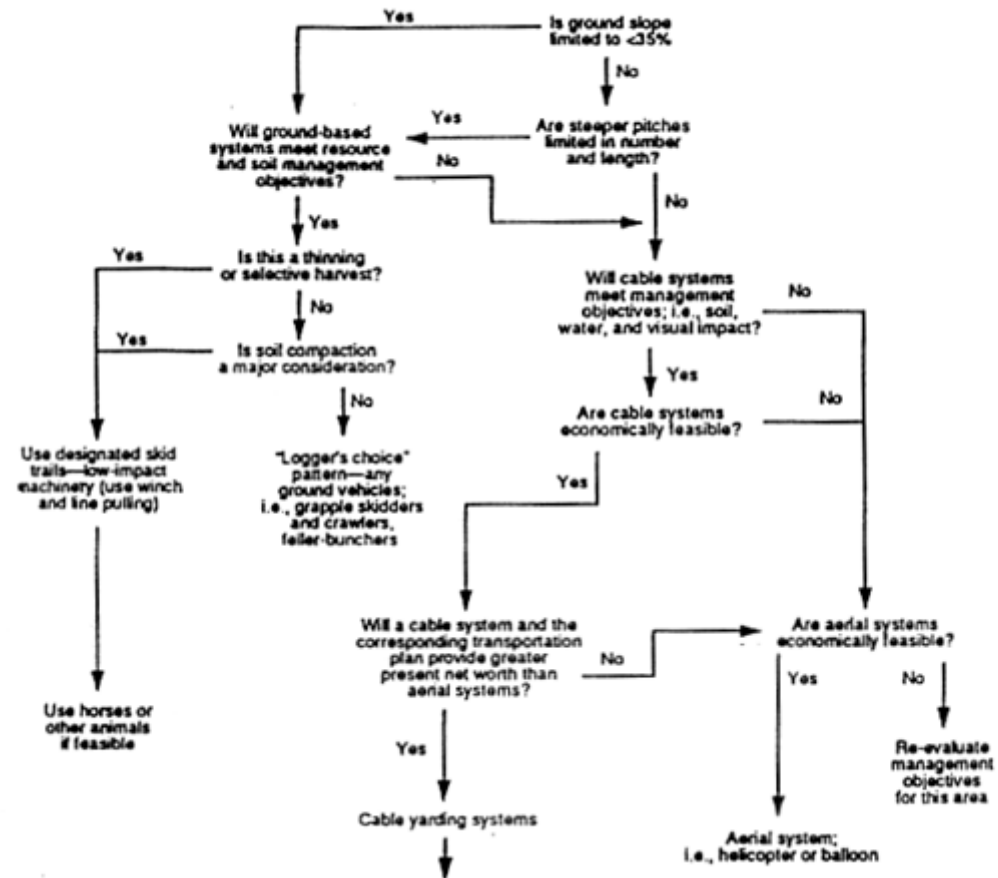
1. **Be able to explain harvesting process engineering terminology, and identify the capabilities and limitations of different equipment/systems operating in a range of different forest resource conditions**

- Supply or Value Chain: A more comprehensive model

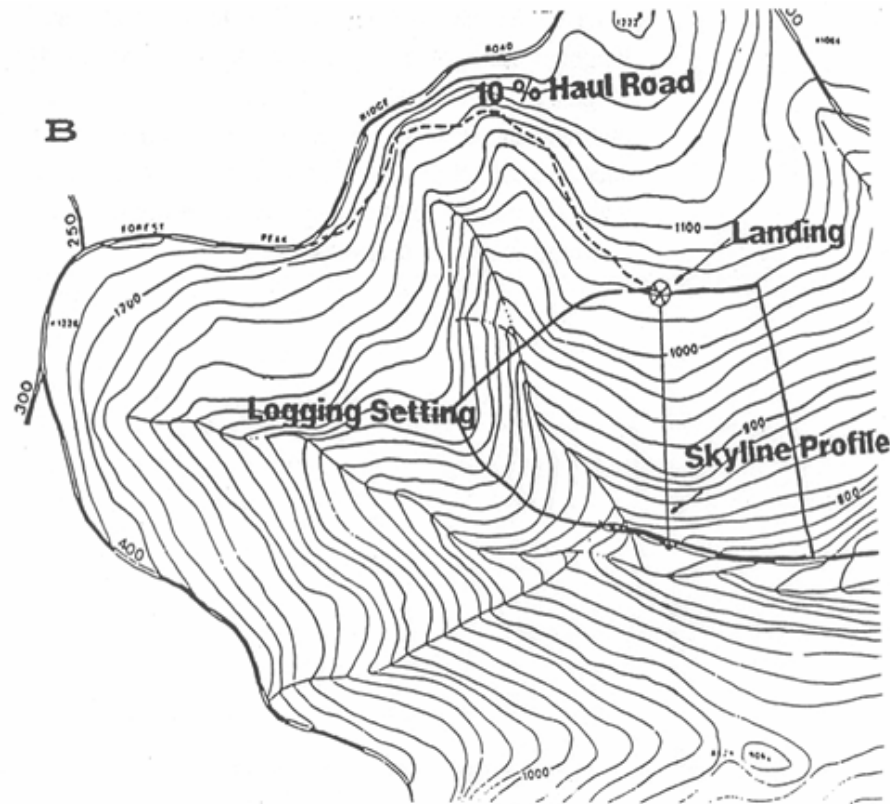


## 2. Identify timber harvesting systems that are best matched with the characteristics of the physical, environmental, economic, and social operating environments.

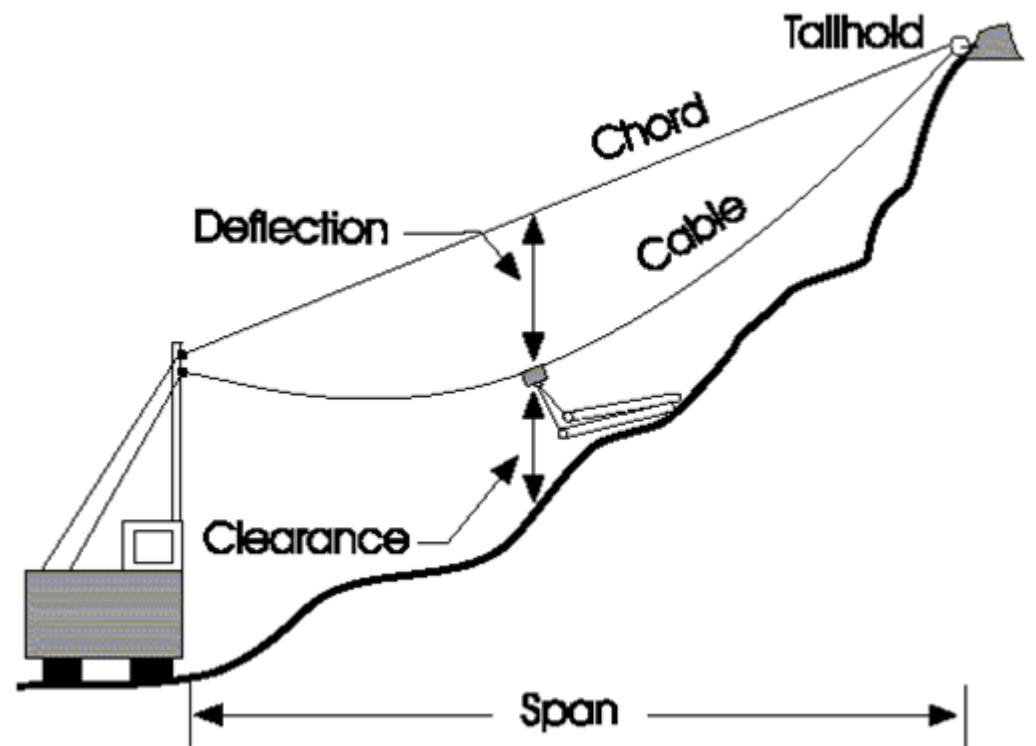
The selection of harvesting systems follows a decision matrix:



**3. Be able to describe the harvest planning process including different levels (or types) of harvest plans, and harvest planning objectives related to sustainable forest resource management practices. Complete a tactical harvesting and road plan for ground-based and cable yarding methods.**



4. Be able to assess terrain and determine maximum skyline log loads for harvest planning with cable systems.



5. Be able to describe the engineering requirements and alternative methods for skyline system anchors, tailtrees, and intermediate support tree rigging.

