



Deschutes & Ochoco National Forests and Prineville BLM

**Central Oregon Fire Management Service
OUTREACH NOTICE**

Prescribed Fire & Fuels Specialist, ADFMO Fuels

GS-462-08/09

OCR # PERM-OCR-462-8/9-FUEL(G&DP)

The Deschutes National Forest is advertising a permanent full-time GS-462-08/09 ADFMO position. This position works for Central Oregon Fire Management Service (COFMS), an interagency fire management organization serving the Deschutes National Forest, Ochoco National Forest, Crooked River National Grassland, and Prineville District Bureau of Land Management. The position is located on the Deschutes National Forest's Newberry Division in Crescent, Oregon.

This position is being advertised using the 'open continuous roster' process. To be considered, you must apply to this announcement on www.usajobs.gov and you must list Crescent, Oregon as a preferred location. The referral list for this position will be requested on September 25th, 2009. Applications will be submitted using the AVUE automated system at www.avuecentral.com. All application materials must be complete and submitted by this date.

ABOUT THE POSITION:

This position is one of three Fuels Planning/Implementation ADFMO's supervised by the Newberry Division Fire Management Officer. The Newberry Division covers the geographic area of the Deschutes National Forest's Bend Ft. Rock and Crescent

Ranger Districts and the BLM lands in the La Pine basin, approximately 1 million acres.

The ADFMO for the Newberry Division

- May serve as Acting Division Fire Management Officer in the absence of the Division FMO.
- Assists the Division FMO in developing comprehensive plans for the protection of valuable resources.
- Participates on and occasionally leads, Interdisciplinary Planning Teams at the District level as Fuels Specialist.
- Directs and coordinates the unit's fuels planning and implementation operations.
- Directs and plans prescribed fire activities including burn plan preparation and implementation of prescribed fire and fuels program.
- Assists, as needed, directing safe initial attack and extended attack suppression actions, including determining incident needs, dispatch and deployment of personnel and equipment.
- Regularly serves as course coordinator/instructor in fuels/fire management-related courses.

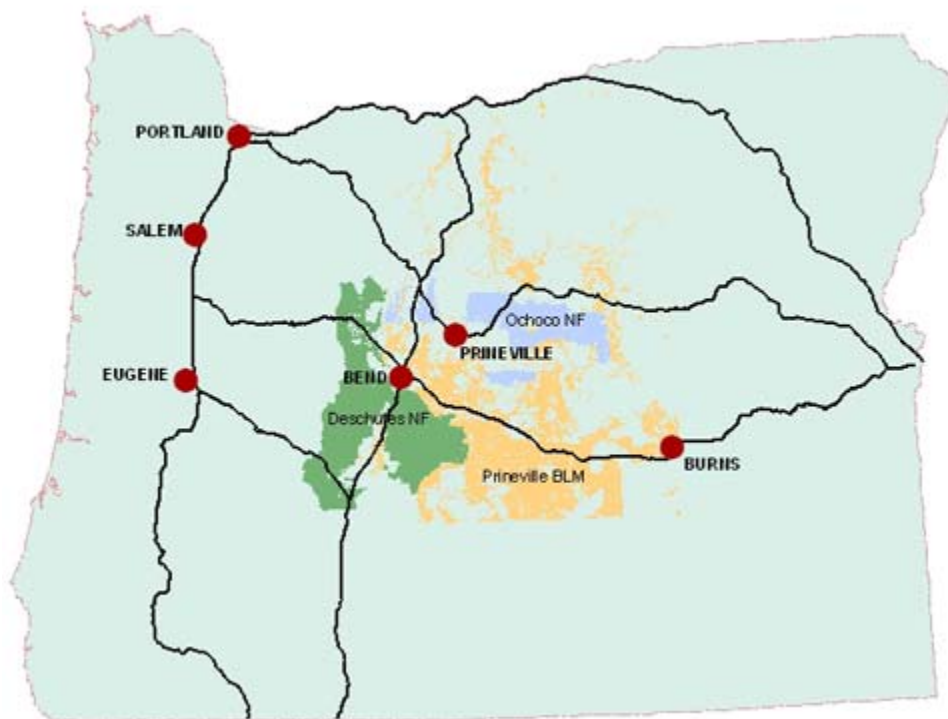
This is a secondary firefighter position. The selected applicant will be required to take and pass the Work Capacity Fitness Test at the Moderate level and to maintain that qualification. The selected individual will also be required to meet the Interagency Fire Program Management (IFPM) qualifications for ADFMO Fuels which includes RXB2 and CRWB or ENGB, or other level as indicated by the current unit complexity analysis (high), and IFPM implementation status. Note: future opportunities to convert this position to a professional series may be explored as the USFS more clearly defines alternatives to the 401 series.

ABOUT Central Oregon Fire Management Service:

The Central Oregon Fire Management Service (COFMS) area includes the Deschutes National Forest, the Ochoco National Forest, and the Prineville District BLM. These three units are managed cooperatively under combined leadership, with an Interagency Fire Management Officer, two Deputy Fire Management Officers, and other sub-staff functions working for a Board of Directors including Forest Service District Rangers and BLM Field Managers from both agencies. These units work to manage fire, fuels and aviation programs on the public lands throughout Central Oregon.

Public lands in Central Oregon are widely scattered. The Prineville BLM district boundary encompasses approximately 12.7 million acres between the Columbia River to the north, south of the town of Crescent in Klamath County to the south, the Cascade crest on the west, and near the town of John Day at the eastern boundary. Within that broad area, the two forests and BLM holdings total over 4 million acres.

COFMS is divided into four divisions, each managed by a Fire Management Officer. Dispatching is managed by the Central Oregon Interagency Dispatch Center, which also includes functions for the Oregon Department of Forestry's Prineville Unit. COFMS fire resources include engine crews, hand crews, water tenders, dozers, prevention units, lookouts, and an Interagency Rappel program.



ABOUT THE AREA:

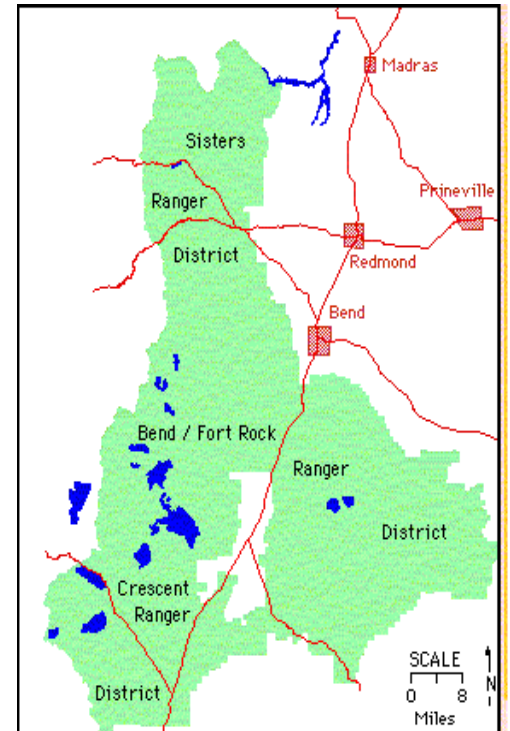
THE DESCHUTES NATIONAL FOREST

The Deschutes National Forest encompasses 1.6 million acres ranging from the Cascade Mountains to the high desert. The Forest is one of 19 national forests in the Pacific Northwest Region. The Forest lands fall into Deschutes, Jefferson, Klamath and Lake Counties and has four wilderness areas as well as the Newberry National Volcanic Monument. The Forest, with its Supervisor's Office in Bend, is composed of the Sisters, Crescent and Bend/Ft. Rock Ranger Districts, and the Bend Seed Extractory.

The Deschutes also administers the Redmond Air Center, located two miles east of Redmond, Oregon. The Redmond Air Center serves as the base for smokejumpers, an Interagency Hotshot Crew, an air tanker base, the Regional Air Group and the Regional Fire Cache. The Regional fire training center is also at Redmond. Central Oregon Interagency Dispatch Center is located at the airport in Prineville, Oregon.

The Deschutes has 94 family campgrounds, six group campgrounds, and other recreation sites. In addition, there are 13 resorts, marinas and stores, and 283 summer homes under special use permit. Attractions including 215 lakes and reservoirs, 617 miles of streams provide fishing and boating, winter sports, and thousands of acres of magnificent scenery. Current recreation use places the Deschutes among the top five forests in the nation as a place to visit.

Mt. Bachelor ski area is located on the National Forest 20 miles west of Bend. The ski area serves nearly a million people who recreate here each winter. Facilities are provided for both downhill and cross country skiing. Throughout the Deschutes there are number of trails marked for snowmobiling and cross country skiing.



ABOUT THE DUTY STATION:

Crescent Ranger District is located 50 miles south of Bend Oregon, and 90 miles north of Klamath Falls Oregon, at the crossroads of Highway 97 and Highway 58 in Klamath County. Crescent is the southern most District of the Deschutes National Forest, comprised of approximately 315,000 acres. A small portion of this acreage is located in the Diamond Peak Wilderness and the Oregon Cascade Recreation Area.

The elevation of the District ranges from 4,300 to about 8,740 feet at the mountain tops. The weather varies during the summer from warm days to cool nights and often has below freezing temperatures during the winter. The landscape is dominated by lodge pole pine and ponderosa pine and at higher elevations by mixed conifer to sub-alpine-alpine vegetation. Dominant shrubs are bitterbrush in the lower elevations and snowbrush at the higher elevations.

The District offers a variety of recreation opportunities. There are 130 lakes on the District. The larger lakes are Odell, Crescent, Summit, and Davis. There are also several streams which provide varied fishing opportunities. Other recreation opportunities include hiking, camping, hunting, scenic viewing, snowmobiling and cross-country skiing.

More detailed information about Central Oregon may be obtained from the following websites:

- www.fs.fed.us/r6/centraloregon
- www.redmondcofc.com
- www.bendchamber.org
- <http://www.ohwy.com/or/p/prinevil.htm>
- <http://www.oregon.com/towns/madras>
- <http://www.edforco.org>

The U.S. Department of Agriculture (USDA) prohibits discrimination in all its programs and activities on the basis of race, color, national origin, age, disability, and where applicable, sex, marital status, familial status, parental status, religion, sexual orientation, genetic information, political beliefs, reprisal, or because all or part of an individual's income is derived from any public assistance program. (Not all prohibited bases apply to all programs.) Persons with disabilities who require alternative means for communication of program information (Braille, large print, audiotape, etc.) should contact USDA's TARGET Center at (202)720-2600 (voice and TDD). To file a complaint of discrimination, write to USDA, Director, Office of Civil Rights, 1400 Independence Avenue, S.W., Washington, DC 20250-9410, or call (800) 795-3272 (voice) or (202) 720-6382 (TDD). USDA is an equal opportunity provider and employer.

!!!*****!!!