



National Forests in Mississippi

"The South's Friendliest Resource"

OUTREACH ANNOUNCEMENT ONE POSITION

Forestry Technician, Senior Firefighter

Southern Region, R8
National Forests in Mississippi
Tombigbee Ranger District

The National Forest in Mississippi will soon be filling one permanent part time (18&8) Forestry Technician (Senior Firefighter) GS- 4/5 position located in Ackerman, Mississippi. This position will be filled under OCR announcement # **ADS08-FSJOBS-HANDCREW-0405D** or **ADS08-FSJOBS-HANDCREW-0405G**. These positions can be found on the web at www.usajobs.opm.gov. **Applications must be submitted through AVUE by September 25, 2009.** For assistance in locating the vacancies or other questions contact John Townsend at (662)236-6550 ext. 228 or e-mail jtownsend@fs.fed.us

Position Major Duties

This is a standard wildland fire management position description intended for use in the USDA, Forest Service. The position is located on a wildland fire crew. The purpose of the position is wildland fire suppression/management/control as a specialized firefighter with responsibility for the operation and maintenance of specialized tools or equipment.

Other wildland fire related duties may involve fire prevention, patrol, detection, or prescribed burning. The incumbent may be assigned for varying periods of time into one or more types of positions within the wildfire program where the individual's specialized skills are required.

This position meets the definition of an Interagency Fire Management Program (IFPM) position, as designated by WO Fire Management. The incumbent must meet the qualifications specified in the Qualifications Standards and Guide prior to October 1, 2009.

Crew Member Work 60%

Serves as an experienced firefighter on a hand crew or other related fire suppression crews performing fire suppression and/or fuels management duties under the most adverse conditions of climate, fuels, and terrain. Performs the duties of a fully qualified chain saw operator and chainsaw repair technician. Certified in the use of helicopter long lines. Performs all aspects of wildland and prescribed fire operations including preparation, ignition, monitoring, holding, and mop up. Collects fire weather data, fuel and/or soil moisture samples, maps projects, and maintains records. May on occasion serve as driver of a crew carrier.

Gathers and considers information on weather data, topography, fuel types, and fire behavior in responding to wildland fire incidents. When positioning and deploying personnel and equipment, recommends best approaches and practices to use in protection of the values at risk

Responsible for operation and maintenance of specialized equipment used to respond to wildland and prescribed fire situations. Accomplishes emergency repairs as necessary to permit continued use of equipment. In those instances when the apparatus cannot be used effectively in suppressing the fire, the incumbent takes aggressive control action in attacking the fire, using other means.

Participates in wildland fire and safety training in the techniques, practices, and methods of fire suppression and in the safe, efficient operation and use of tools, equipment, and vehicles used in fireline activities, with emphasis on those used in the particular function

assigned. Participates in crew proficiency checks and drills, safety sessions, and fire critiques. Ensures own and other's welfare and safety in all aspects of the assignment.

Forestry Activities Support 40%

Performs the full range of standardized forestry support duties for fire, timber, silviculture, recreation, wilderness, or research activities. Performs the full range of standardized forestry support duties for fire, timber, silviculture, recreation, wilderness, or research activities.

May inventory fuel beds, prepare associated reports, perform hazard fuel reduction projects, monitor burning conditions, pile vegetation debris and act in assigned positions such as ignition or holding specialist or other designated positions during actual fuel reduction efforts by prescribed fire.

May perform project work such as road and trail maintenance, habitat manipulation, and miscellaneous equipment and facilities maintenance.

May assist higher level workers in forestry/range research efforts; in the marketing of forest/range resources; or in the scientific management, protection, and development of forest/range resources.

Must possess a valid state driver's license and have the ability to operate light vehicles and 4X4s.

May be required to fill-in for other work leader son established crews.

OTHER SIGNIFICANT FACTS:

WORK CAPACITY TEST (WCT) for Wildland Firefighters: This position participates in wildland firefighting activities. Based on the type of work performed, TAKING and PASSING the WCT at the ARDUOUS level is a "condition of employment." The Arduous fitness (Pack) Test consists of a three (3) mile hike, within forty-five (45) minutes, while carrying a forty-five (45) pound pack.

FIREFIGHTER RETIREMENT COVERAGE: This is a primary/rigorous firefighter position under the provisions of 5 USC 8336(c) (CSRS) and 8412(d) (FERS).

AREA INFORMATION

OUTDOOR ACTIVITIES



There are many ways to stay cool in Mississippi's sub tropical climate. Many look forward to the creeks and rivers in the southern third of the state which are lined with sugar white beaches and clear clean waters. The most popular canoeing streams such as the Strong River, Okatoma Creek, and Black Creek which have businesses that specialize in renting

canoes and kayaks for various float trip lengths. Pascagoula River is one of the healthiest riverine ecosystems in the Southeastern United States. The Pascagoula basin, covering 8,800 square miles, is the largest, essentially unfragmented river system in the lower 48 United States, representing critical breeding, migrating and wintering habitat for a multitude of birds and other wildlife.

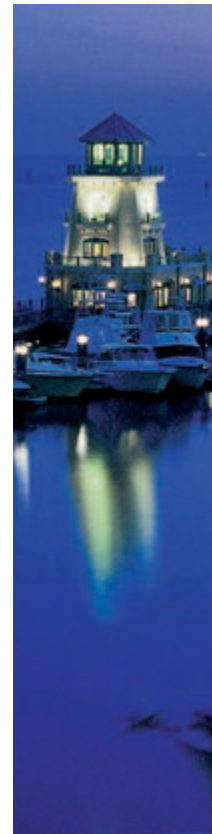


ENTERTAINMENT



Mississippi has fast become the gaming capitol of the south. No less than 29 large Casinos are located in the state. Two of the largest are operated by the Mississippi Band of Choctaw Indians centrally located in the state. The rest are located along the Mississippi River and along the Gulf Coast. These casinos bring

many talented entertainers into the state.



MUSIC



In the 1930s Robert Johnson sold his soul to the devil at the intersection of highway 61 and 49 outside of Clarksdale in exchange for guitar skills, singing, and songwriting talent. He is called "the most important blues musician who ever lived," and "the Father of Rock and Roll." Route 61 "The Blues Highway" runs through Mississippi's delta

region, a flat rich soil farm country that spawned the birth of many blues musicians. Names like Bo Diddley, Muddy Waters, Leadbelly, Charley Patton, Howlin' Wolf, John Lee Hooker, Bessie Smith, Ike Turner, B.B. King, and many others took this route out of Mississippi to spread the blues to Memphis, Chicago, New Orleans, and the world. Today the Blues Highway is celebrated yearly by

over 40 music festivals across the state. Night club Ground Zero in Clarksdale owned by actor Morgan Freeman has become a world destination to hear the Delta Blues.



HIGHER LEARNING



One or more world class Universities are located within a short drive of any of the

six National Forests in Mississippi. The big three are the University of Southern Mississippi in Hattiesburg with a student population of 16 thousand; Mississippi State University in Starkville and Meridian with a student enrollment of 15,100; the University of Mississippi's three campuses and The University of Mississippi Medical Center has a total enrolment of 17,300. Other notable institutions are Delta State University, Jackson State University, Mississippi Valley State University, Alcorn State University, Mississippi University for Women and 30 other colleges and community colleges dotted across the state.

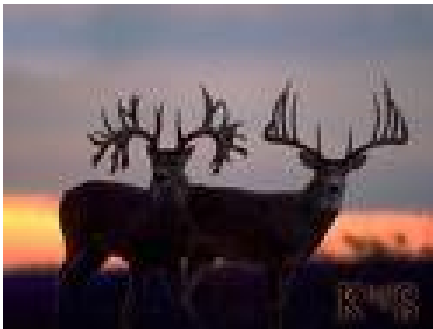


SPORTS

Jackson is home of the Mississippi Braves, farm team for the Atlanta Braves. One New Orleans Saint's game per year is played in Jackson, where they train each year at Millsaps University. The SEC (Southeastern Football Conference) routinely contains most of the teams in the top 25 polls. Tailgating at these games is more than a traditional past time, it's an art.



HUNTING AND FISHING



Located in the Mississippi flyway duck hunting is excellent. Largemouth Bass are common at 15 pounds or greater. National Forest in Mississippi has just opened the first lake that was designed by the nation's top bass pro, Bill Dance. The state has just enacted new regulations on deer harvesting designed to produce more and bigger trophy deer in the state.

OUR FOREST



The National Forest's in Mississippi has very active During the last 10 years Mississippi's timber program is the most active in the nation, marking more board feet than any of the Forest's located in the Northwest. Our heritage program, passport-in-time, leads the nation in it's thousands of volunteer hours per year while uncovering a rich a varied past. We are leaders in saving several of the nation's keystone endangered species such as the Gopher Frog, the Gopher Tortoise, Red Cockaded Woodpeckers, Price's Potato Bean, Louisiana Quillwort, and various Neo-Tropical Migratory Birds. Each spring we get together for fellowship and games at our Unity Day. In 2007 we received the McGuire Award for our efforts on Katrina Recovery which salvaged over 300 million board feet